

## Installation

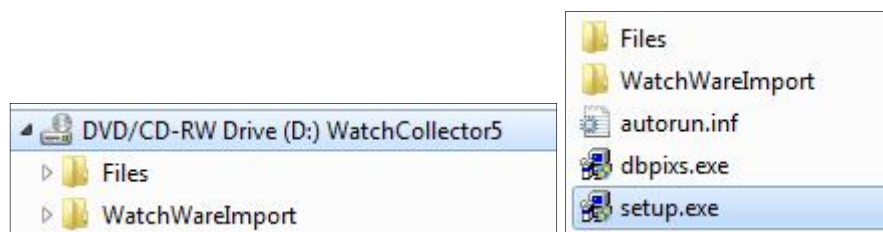
The Clock Collector program is a Microsoft Access database built in two parts, the program file and the database file. The program file is separated from the database file so that updates can be provided if necessary without impacting your data file.

Ver 5 database file has changed from previous versions in that it is one single file rather than multiple database files. This makes file management easier.

The database program uses the runtime version of Microsoft Access 2007. This is included with the installation package and will install automatically. In addition to MS Access runtime, a separate program file will install an ActiveX file (DBPix20.ocx) that is used for picture handling in the Clock Collector program. This file will also be automatically installed. Please do not delete the folder c:\Program Files\WatchWare\DBPix 2.0 Control. This is where the ActiveX file resides.

## Clock Collector

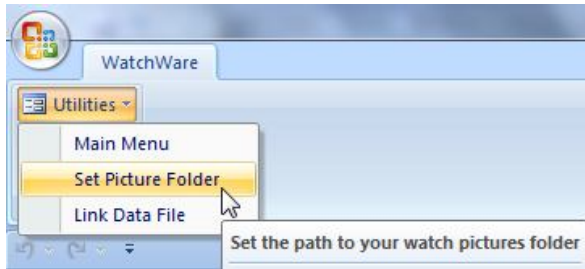
To install Clock Collector, insert the CD and the setup program should automatically open if autorun is enabled. If it is not enabled, open Windows Explorer, select your CD drive and double-click the setup.exe file in the root directory. The setup will start. It is recommended that you accept the default installation path c:\Program Files\WatchWare or you will have to re-link your database file.



The Clock Collector program and database file will be installed and a shortcut will be created that can be found by clicking on <Start><All Programs><ClockCollector5>. After the Clock Collector program files are installed, the runtime version of Microsoft Access will be installed. Upon completion a separate installation file will run to install the ActiveX file. If this file does not install for some reason, it is included on the CD with the file name "DBPixs.exe". It can be found on the CD in the "WatchCollector5\Files" folder or you will find a copy that was copied to the "c:\Program Files\WatchWare" folder.

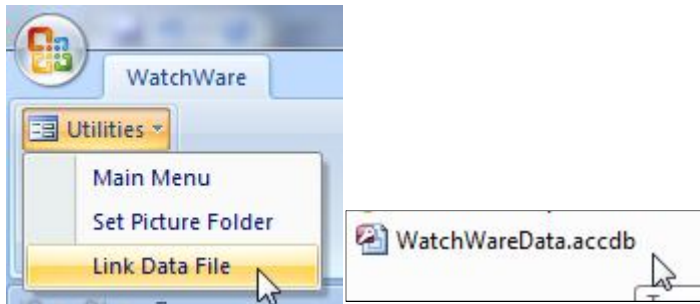
## Picture Folder

Clock Collector Ver 5 does not store pictures in the database file. Instead it uses links to picture files. Once you open Clock Collector Ver 5 for the first time, you need to set the path for your picture folder. Do this by clicking on "Utilities" found on the "WatchWare" ribbon. Select "Set Picture Folder" to open a folder browser window so you can select the folder where you store your watch pictures. It is recommended that you create a subfolder under the WatchWare folder for this. Picture files should be .jpg format.



## Linking the Data File

If needed, you can re-link the data file. This should only be necessary if you install WatchWare to a folder other than the default folder. Select "Link Data File" from "Utilities" found on the "WatchWare" ribbon. A browser window will open to the default path "C:\Program Files\WatchWare". Select the file "ClockData.accdb" and the data tables will be re-linked.



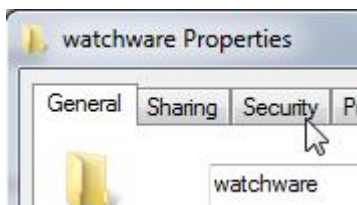
## Known Issues with Windows Vista

If you are using Windows Vista, you will need to change the permissions on the "C:\Program Files\Watchware" folder to allow you to write to the data file. Vista starts with this folder with "Read Only" permissions. To change the folder permissions, perform the following steps

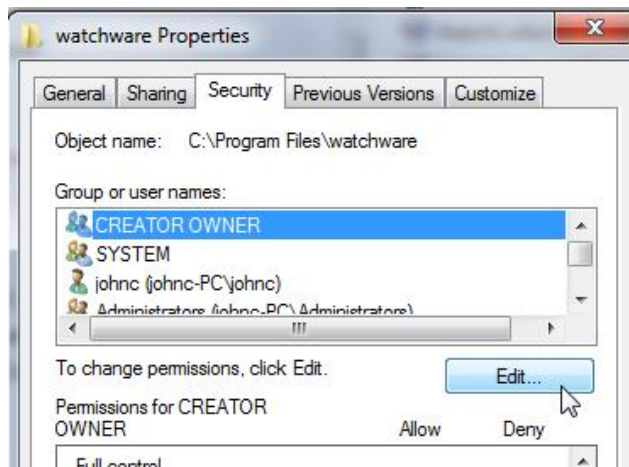
STEP 1: Right click on the "WatchWare" folder (using Windows Explorer)



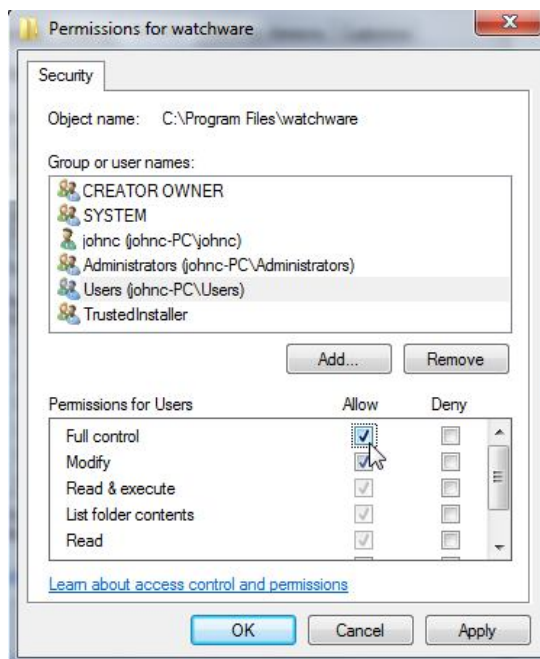
STEP 2: Click on the "Security" tab



STEP 3: Click on the <Edit> button



STEP 4: Select "Users", click on "Full Control" and then <OK>



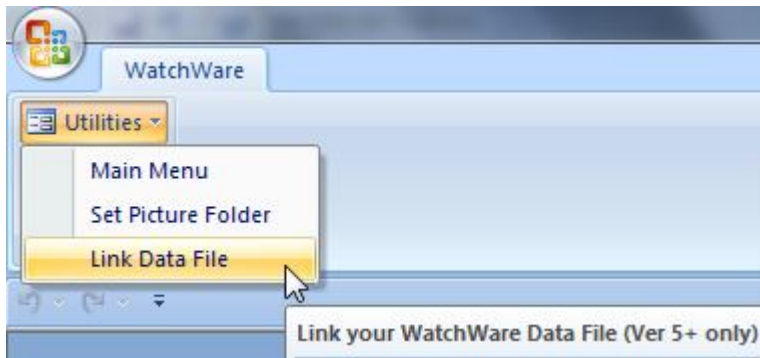
## Getting Started

After you have installed Clock Collector you can open the program by clicking on <Start><All Programs><WatchWare><Clock Collector>.

## Data File Linking

The data file is where all the data you input is stored. The file name is ClockData.accdb. It also contains all the data for the drop down lists that make data entry easier.

If you installed it to the default installation folder c:\program files\watchware, you will not have to re-link the data file. If you installed the program to any other folder, you will have to re-link to the database file. To do this click on the 'Ribbon' at the top of the open program and select <Utilities><Link Data File>.



A browser window will open to allow you to find the folder where the ClockData.accdb file is located. Select the file and the program will link the tables.

